

D (Printed Pages 3)
(21224) Roll No.
B.C.A.-V Sem.

18021
B.C.A. Examination, Dec.-2024
Introduction to DBMS
(BCA-501)

Time : Three Hours] [Maximum Marks : 75

Note : Attempt questions from **all** sections as per instructions.

Section - A

Note : Attempt **all** the questions. 3×5=15

1. What is schema?
2. What are the advantages of using DBMS?
3. Who is a DBA?
4. What is a database?
5. What is RDBMS?

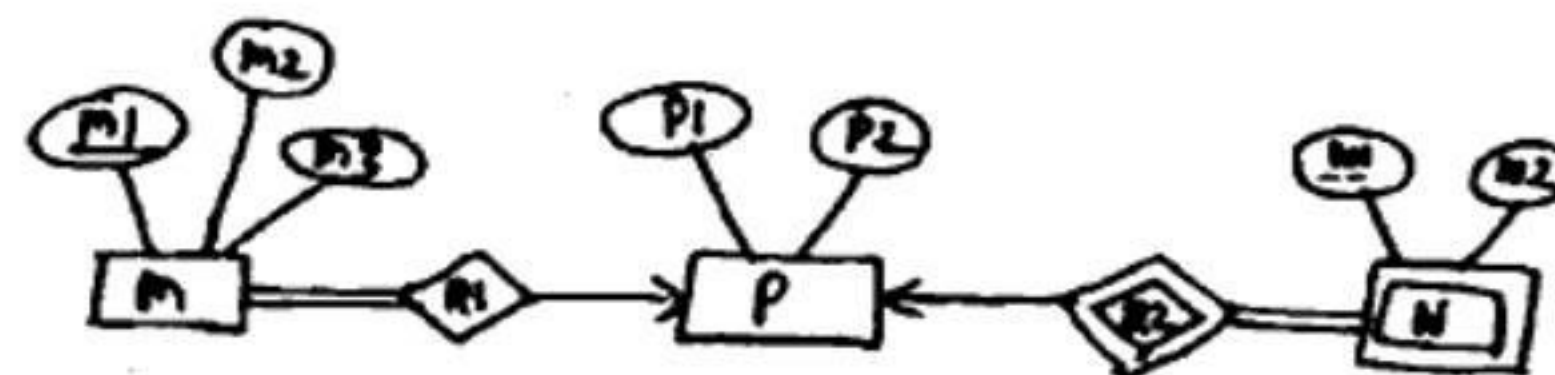
P.T.O.

Section-B

Note : Attempt any **two** questions.

7.5×2=15

6. Find the minimum number of tables required for the following ER diagram in relational model-



7. What are UNION, MINUS and INTERSECT commands in DBMS?
8. Define the following terms-
(a) Data model
(b) Data base schema

18021/2

Section-C

Note : Attempt **any three** questions.

15×3=45

9. Define normal forms. Explain 1NF, 2NF, 3NF and BCNF with suitable example.
10. Explain normalization with advantages.
11. Explain SQL with various characteristics.
12. What is relational algebra? Discuss its basic operations. <https://www.validcollege.com>
13. Explain the reduction of ER schema to tables.